

# Journal of Global Infectious Diseases

J Glob Infect Dis. 8(1): 25-31

## Incidence of Multidrug-Resistant *Pseudomonas* Spp. in ICU Patients with Special Reference to ESBL, AMPC, MBL and Biofilm Production

Richa Gupta, Abida Malik, Meher Rizvi, S. Moied Ahmed<sup>1</sup>

Department of Microbiology, J N Medical College, Aligarh, India

1. Department of Anaesthesiology and Critical Care, AMU, Aligarh, India

**Address for correspondence:** Dr. S Moried Ahmed, E-mail: sma99@rediffmail.com

**Copyright:** © Journal of Global Infectious Diseases

DOI: 10.4103/0974-777X.176142

Published in print: Jan-Mar2016

### Abstract

#### Background:

Multidrug-resistant (MDR) *Pseudomonas* spp. have been reported to be the important cause of ICU infections. The appearance of ESBL, AmpC and MBL genes and their spread among bacterial pathogens is a matter of great concern. Biofilm production also attributes to antimicrobial resistance due to close cell to cell contact that permits bacteria to more effectively transfer plasmids to one another. This study aimed at determining the incidence of ESBL, AmpC, MBL and biofilm producing *Pseudomonas* spp. in ICU patients.

## **Material and Methods:**

The clinical specimens were collected aseptically from 150 ICU patients from February 2012 to October 2013. Identification and antimicrobial susceptibility was performed according to Clinical and Laboratory Standards Institute (CLSI) guidelines. ESBLs and AmpC were detected phenotypically and genotypically. MBL was detected by modified Hodge and imipenem-EDTA double-disk synergy test.

## **Results:**

*Pseudomonas* spp. 35(28%) were the most prevalent pathogen in ICU infections. Multidrug resistance and biofilm production was observed in 80.1% and 60.4% isolates, respectively. Prevalence of ESBL, AmpC and MBL was 22.9%, 42.8% and 14.4%, respectively. The average hospital stay was 25 days and was associated with 20% mortality.

## **Conclusions:**

A regular surveillance is required to detect ESBL, AmpC and MBL producers especially in ICU patients. Carbapenems should be judiciously used to prevent their spread. The effective antibiotics, such as fluoroquinolones and piperacillin-tazobactam should be used after sensitivity testing.

# INTRODUCTION

*Pseudomonas* spp. are one of the most common gram-negative pathogens associated with infections in ICU patients including bacteremia, urinary tract infections, and surgical site infections, but they predominate as agents of lower respiratory tract infections.[1]

*Pseudomonas* spp. shows a high level of intrinsic resistance to antimicrobial drugs and an ability to become even more drug resistant. These

characteristics are caused by selective pressure of mutations in chromosomal genes that lead to production of ESBL and AmpC hyper expression, repression or inactivation of oprD, and over expression of efflux pumps.[2] In addition, *Pseudomonas* spp. are able to acquire other drug-resistant determinants by horizontal transfer of mobile genetic elements coding for class B carbapenemases (also called metallo- $\beta$ -lactamases [MBLs]).[3] Because they can be disseminated horizontally through transfer of resistance determinants, MBLs have become a serious concern in hospitals worldwide over the past decade. Such acquired MBLs include the IMP and VIM types SPM-1, GIM-1, SIM-1, AIM-1, KHM-1, NDM-1, and SID-1.[45] MBL genes are normally encoded in class 1 integrons along with other resistance determinants, such as the aminoglycoside-modifying enzymes. The integrons are frequently located in plasmids or transposons, the dissemination of which contributes to the global spread of this resistance mechanism.[67]

*Pseudomonas* spp. may also acquire resistance to antibiotics due to permeability barrier of the cell surface in the form of biofilm production. The tendency for bacteria to become surface bound is so ubiquitous in diverse ecosystems that it suggests a strong survival strategy and selective advantage for surface dwellers over their free-ranging counterparts. Virtually any surface, biotic or abiotic (animal, mineral, or vegetable), is suitable for bacterial colonization and biofilm formation. Biofilm is defined as “a structured community of bacterial cells enclosed in a self-produced polymeric matrix adherent to an inert or living surface.” Biofilm-producing organisms are far more resistant to antimicrobial agents than organisms which do not. In some extreme cases, the concentrations of antimicrobials required to achieve bactericidal activity against adherent organisms can be three- to four-fold higher than for those bacteria which do not produce biofilm, depending on the species and drug combination.[8] The versatility and ability of

*Pseudomonas* spp. to combine different resistance mechanisms has led to emergence of strains that are resistant to multiple antimicrobial drugs, which severely limits therapeutic options for treating infections.[9] This emphasizes the need for the detection of isolates that produce these enzymes to avoid therapeutic failures and nosocomial outbreaks.

This study was designed to assess the problem of multidrug-resistant (MDR) *Pseudomonas* spp. prevalent at various infective foci in ICU patients and to determine the risk factors predisposing to these infections. This study aimed at determining the incidence of ESBL, AmpC, MBL and biofilm producing *Pseudomonas* spp. in ICU patients.

## MATERIALS AND METHODS

The present study was carried out in the Department of Microbiology on ICU patients of J. N. Medical College, Aligarh Muslim University, Aligarh, from February 2012 to October 2013. A total of 150 patients admitted in the ICU were recruited in the study.

Complete history was taken from each patient. One or more clinical samples were obtained from each patient (tracheobronchial aspirate, blood, pus, urine). All specimens were collected aseptically and were promptly sent to the Microbiology laboratory. Standard methods for isolation and identification of aerobic[1011] bacteria were used.

Susceptibility testing of aerobic and anaerobic isolates was performed using the disk diffusion method as described by the Clinical and Laboratory Standards Institute (CLSI).[12] Antimicrobial disk used were imipenem (10 µg), cefpodoxime (10 µg), cefotaxime (30 µg), cefepime (30 µg), cefixime (5 µg), cefoperazone (75 µg), cefoperazone/sulbactam (75/10 µg), ticarcillin (75

µg), piperacillin (100 µg), piperacillin/tazobactam (100/10 µg), ceftazidime (30 µg), ceftazidime/clavulanic acid (30/10 µg), cefotaxime/clavulanic acid (30/10 µg), ceftriaxone (30 µg), amikacin (30 µg), gentamicin (10 µg), tobramycin (10 µg), ofloxacin (5 µg), levofloxacin (5 µg), polymyxin B (300 units) and colistin (10 µg). All discs were obtained from Hi-Media Labs, Mumbai, India.

### Phenotypic methods for ESβL detection

*Pseudomonas* isolates were first screened for the production of ESBL by the disk diffusion method (screening test) using cefotaxime, ceftriaxone, cefepime, and ceftazidime[12] and later on confirmed by the cephalosporin/clavulanate combination disk (disk potentiation test) method using ceftazidime, ceftazidime + clavulanic acid, cefotaxime, cefotaxime + clavulanic acid, cefoperazone, cefoperazone + sulbactam, and piperacillin, piperacillin + tazobactam. A difference of 5 mm between the zone diameters of either of the cephalosporin disks and their respective cephalosporin/clavulanate disk is taken to be phenotypic confirmation of ESBL production.[13]

Double-disk synergy test (DDST)[1314] was also used for phenotypic confirmation of ESBL producers in which the test strains were adjusted to the 0.5 McFarland standard and swabbed on a Muller-Hinton agar plate. A susceptibility disk containing piperacillin-tazobactam was placed in the center of the plate. Disks containing one of the oxyimino-β-lactam antibiotics (cefotaxime, ceftazidime and ceftriaxone) were placed 30 mm (center to center) from piperacillin-tazobactam disk. A clear extension of the edge of the oxyimino-β-lactam inhibition zone toward the disk containing clavulanate was interpreted as synergy indicating a positive result. *Escherichia coli* ATCC 25922 (non-ESBL producer) was used as a control strain.

## Phenotypic methods for AmpC detection

Cefoxitin disks were used to screen AmpC producers by the disk diffusion method.[15] Those isolates which were resistant to cefoxitin were considered as potential AmpC producers.

## Phenotypic methods for MBL detection

The isolates were tested for sensitivity to imipenem (10 µg) using the Kirby-Bauer method as recommended by CLSI.[12] Isolates from various samples showing zone of inhibition less than 16 mm or heaped up zone were screened for MBL production by the following methods.

### Modified hodge test For MBL detection[16]

The indicator organism, *E. coli* ATCC 25922, at a turbidity of 0.5 McFarland standard, was used to swab inoculate the surface of a Mueller-Hinton agar plate (Becton Dickinson, Cockeysville, Md.), and the test strain was heavily streaked from the center to the plate periphery. After the plate was allowed to stand for 15 min at room temperature, a 10 µg IPM disk was placed at the center, and the plate was incubated overnight. The presence of distorted inhibition zone (cloverleaf) was interpreted as a positive result for carbapenem hydrolysis.

### The imipenem-EDTA double-disk synergy test[16]

The test strains were adjusted to the McFarland 0.5 standard and used to inoculate Muller-Hinton agar plates. Disk containing imipenem 10 µg was placed on the plate and a blank filter paper soaked with 10 µl of 0.5 M EDTA solution was placed at a distance of 10 mm (edge to edge). After overnight incubation, the presence of synergistic inhibition zone was interpreted as positive.

## Genotypic methods for the detection of ESBL and AmpC production

Preparation of DNA template: Template DNA was prepared from freshly cultured bacterial isolates by suspending bacterial colonies in 50  $\mu$ L of molecular-grade water and then heating at 95°C for 5 min and immediately chilling at 4°C.

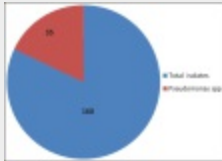
Detection of bla genes by polymerase chain reaction: Molecular detection of bla<sub>CTX-M</sub>, bla<sub>TEM</sub>, bla<sub>SHV</sub>, bla<sub>AmpC</sub> was performed by using polymerase chain reaction (PCR) according to methods described previously with minor modifications.[1718] The primers and cycling conditions for detection of bla genes were the same as those described by Shahid et al.[18] and Feria et al. [19]

## Detection of biofilm in Pseudomonas isolates

In vitro biofilm forming ability of Pseudomonas isolates was tested by the tube method, as described by Hassan et al.[20] and Mathur et al.,[21] with slight modification. 0.5 ml ( $1.5 \times 10^8$  organism/ml) of 48 hour culture saline washed suspension was inoculated into a polystyrene tube containing 4.5 ml of trypticase soy broth (TSB) with 1% glucose.[21] Tubes were incubated at 37°C for 48 hours without agitation. After 48 hours, the culture broth in the tube was aspirated, and the tubes were washed twice with distilled water. The walls of tube were stained with 0.1% crystal violet after media and cells were discarded. Excess stain was removed and tubes were washed with water. Tubes were then dried in inverted position and observed for biofilm formation.

## RESULTS

From 150 patients admitted to ICU, total number of isolates was 160. 121 (75.6%) were gram-negative bacilli, 22 (13.8%) were gram-positive cocci and 10.6% were fungal isolates. *Pseudomonas* spp. represented 35 (28%) of isolates as shown in [Figure 1](#).



[View larger version](#)

**Figure 1.** The various strains of micro-organisms isolated from the patients admitted in ICU

[Table 1](#) shows that *Pseudomonas* spp. were commonly isolated from endotracheal aspirate (40%), followed by wound (24.1%) then urine (26.3%) and blood (10%) with no statistically significant difference.

**Table 1**  
Distribution of *Pseudomonas* spp. according to the type of specimen

| Type of specimen             | <i>Pseudomonas</i> spp. (%) |
|------------------------------|-----------------------------|
| Endotracheal aspirate (n=35) | 40.00                       |
| Wound (n=14)                 | 24.10                       |
| Urine (n=31)                 | 26.30                       |
| Blood (n=10)                 | 10.00                       |

[See full table](#)

**Table 1.** Distribution of *Pseudomonas* spp. according to the type of specimen

The most important risk factors significantly associated with infections caused by *Pseudomonas* spp. in ICU were endotracheal intubation and mechanical ventilation ( $P = <0.0001$ ). Comorbid conditions significantly associated with ICU infections were COPD ( $P = 0.001$ ) and hypertension ( $P = 0.004$ ). Duration of ICU stay of 7-15 days ( $P = 0.03$ ) and  $> 15$  days ( $P = 0.0006$ ) were also statistically significant factor associated with ICU infections [[Table 2](#)].



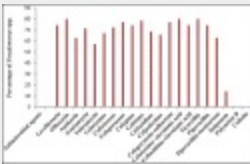
**Table 2**  
Number and percentage of total and *Pseudomonas* spp.-positive cases in relation to risk

| Risk Factors                            | Total No. and % of +ve Cases (n = 332) (%) | No. and % of +ve Cases of <i>Pseudomonas</i> spp. (n = 332) (%) | P-value |
|---|--|---|---------|
| Exposure to invasive devices or surgery |  |   |         |
| Endotracheal tube/ tracheostomy         | 75 (30)                                    | 34 (34.4)   | <0.000  |
| Intravenous catheter                    | 199 (100)                                  | 35 (34.0)   | 1       |
| Central venous line                     | 54 (23.2)                                  | 15 (14.8)   | 0.337   |
| Urinary catheter                        | 199 (100)                                  | 35 (34.4)   | 1.8     |
| Nasogastric tube                        | 90 (45)                                    | 48 (34.4)   | 0.44    |
| Mechanical ventilation                  | 75 (30)                                    | 34 (34.4)   | <0.000  |
| Previous surgery                        | 54 (23)                                    | 15 (14.8)   | 1       |

[See full table](#)

**Table 2.** Number and percentage of total and *Pseudomonas* spp.-positive cases in relation to risk factors

[Figure 2](#) shows antibiotic susceptibility pattern of *Pseudomonas* spp. detected by the disk diffusion method. *Pseudomonas* spp. exhibited high degree of antibiotic resistance against ofloxacin (80.0%), ticarcillin (80.0%), piperacillin (74.2%), gentamycin (71.4%), ceftazidime (68.5%) and cefpodoxime (65.7%). Five isolates (14.3%) of *Pseudomonas* spp. were resistant to imipenem. There was no resistance for polymyxin B and colistin.



[View larger version](#)

**Figure 2.** Antibiotic resistance pattern of *Pseudomonas* spp. detected by the disk diffusion method

All the *Pseudomonas* spp. isolates were further screened for the production of ESBL, AmpC and MBL activity first by phenotypic methods. The positivity for ESBL, AmpC and MBL by phenotypic methods is shown in Tables [3–5](#), respectively.

**Table 3**  
Number and percentage of ESBL-producing *Pseudomonas* spp. detected by phenotypic

| Phenotypic tests         | No. and % of <i>Pseudomonas</i> spp. (%) |
|--------------------------|--|
| Disk diffusion-test      | 8 (10.3)                                 |
| Double-disk synergy test | 5 (6.3)                                  |
| Disk potentiation-test   | 7 (9.1)                                  |

[See full table](#)

**Table 3.** Number and percentage of ESBL-producing *Pseudomonas* spp. detected by phenotypic methods

**Table 4**  
Number and percentage of AmpC producing *Pseudomonas* spp. detected by phenotypic

| Phenotypic tests    | No. and % of <i>Pseudomonas</i> spp. (%) |
|---------------------|--|
| β-lactam inhibition | 4 (14.3)                                 |
| Cefotaxime disk     | 4 (14.3)                                 |

[See full table](#)

**Table 4.** Number and percentage of AmpC producing *Pseudomonas* spp. detected by phenotypic methods

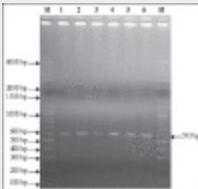
**Table 5**  
Number and percentage of MBL producing *Pseudomonas* spp. detected by phenotypic

| Phenotypic tests                         | No. and % of <i>Pseudomonas</i> spp. (%) |
|--|--|
| Disk diffusion test                      | 5 (14.3)                                 |
| Modified Hodge test                      | 3 (8.6)                                  |
| Impregment-EDTA double disk synergy test | 4 (11.4)                                 |

[See full table](#)

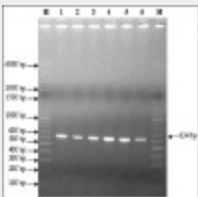
**Table 5.** Number and percentage of MBL producing *Pseudomonas* spp. detected by phenotypic methods

Those isolates which were confirmed phenotypically as ESBL and AmpC producers were subjected to PCR for detection of  $bla_{CTX-M}$ ,  $bla_{SHV}$ ,  $bla_{TEM}$ ,  $bla_{AmpC}$  genes. The frequency of  $bla_{CTX-M}$ ,  $bla_{SHV}$ ,  $bla_{TEM}$ ,  $bla_{AmpC}$  genes is depicted in [Table 6](#).  $bla_{CTX-M}$  was the most prevalent gene. [Figures [3](#) and [4](#)] shows positive results of PCR for  $bla_{CTX-M}$  and  $bla_{AmpC}$  gene respectively.



[View larger version](#)

**Figure 3.** 2% agarose gel electrophoresis showing results of pcr for the detection of  $BLA^{ctx-m}$  gene. lanes m are showing ladders (0' range ruler 100 bp + 500 bp). Lanes 2-6 are showing test strains positive for  $BLA^{ctx-m}$  gene (593 bp). Lane 1- positive control



[View larger version](#)

**Figure 4.** 2% agarose gel electrophoresis showing results of pcr for the detection of  $BLA^{ampc}$  gene. Lanes m are showing ladders (0' range ruler 100 bp + 500 bp). Lanes 2-6 are showing test strains positive for  $BLA^{ampc}$  gene (634 bp). Lane 1- positive control

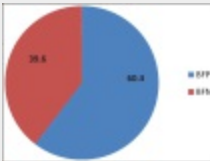
**Table 6**  
bla (CTX-M, SHV, TEM) and blaAmpC gene distribution among Pseudomonas isolates

| Gene distribution | Pseudomonas spp. (n = 35) (%) |
|-------------------|-------------------------------|
| CTX-M             | 6 (17.1)                      |
| TEM               | 10                            |
| SHV               | 10                            |
| AmpC              | 33 (94.3)                     |

[See full table](#)

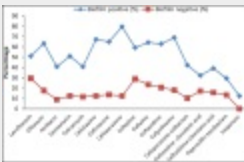
**Table 6.** bla (CTX-M, SHV, TEM) and blaAmpC gene distribution among *Pseudomonas* isolates from ICU patients

[Figure 5](#) depicts the biofilm production in *Pseudomonas* isolates from ICU patients. Among the 35 isolates, 21 (60.4 %) were biofilm producers. [Figure 6](#) shows antibiotic resistance profile of biofilm-positive (BFP) and biofilm-negative (BFN) *Pseudomonas* isolates.



[View larger version](#)

**Figure 5.** Biofilm production in *Pseudomonas* isolates from ICU patients



[View larger version](#)

**Figure 6.** Antibiotic resistance profile of BFP and BFN *Pseudomonas* isolates

## DISCUSSION

*Pseudomonas* spp. are one of the most common gram-negative pathogens associated with infections in ICU patients including bacteremia, urinary tract infections, and surgical site infections, but they predominate as agents of lower respiratory tract infections.[1]

In this study, *Pseudomonas* spp. represented 28% of isolates, similar results were reported by Hadadi et al.,[22] on other hand Chim et al.[23] and Izquierdo-Cubas et al.[24] found that *Pseudomonas* spp. represented 15.6% of

the total isolates.

In this study lower respiratory tract infections (LRTIs) were the most common infection in ICU patients (34.3%). Our results agreed with Hadadi et al.,[22] who found that LRTI in ICU represented 29.5%. and also with that of Yetkin et al.[25] and Izquierdo-Cubas et al.[24] On the other hand, this result was not comparable with that of Al-Ghamdi et al.,[26] who reported that LRTIs represented 8.9% of cases.

In our study *Pseudomonas* spp. were frequently isolated from LRTIs (40%). This agreed with Abd El-Fattah[27] and El Masry.[28]

In our study, age distribution revealed that patients >50 years had higher risk for acquiring infections than younger patients. This result was in agreement with Stéphan et al.,[29] who reported that elderly patients had a higher incidence of infection in ICU compared with younger patients because the aging process leads to variable decline of physiologic functions and differential changes in other organ systems.

Our study showed that the most important risk factors significantly associated with infections caused by *Pseudomonas* spp. in ICU were endotracheal intubation and mechanical ventilation ( $P = <0.0001$ ). Comorbid conditions significantly associated with ICU infections were COPD ( $P = 0.001$ ) and hypertension ( $P = 0.004$ ). Duration of ICU stay of 7-15 days ( $P=0.03$ ) and >15 days ( $P = 0.0006$ ) were also statistically significant factors associated with ICU infections. These results agreed with Giamarellou et al.[30] and Baran et al.[31]

Management of infections due to *Pseudomonas* spp. represents a difficult therapeutic challenge due to the increasing resistance levels of these

organisms to most classes of antimicrobial agents. Our study revealed that on an average 76.1% and 70.2% of the isolated *Pseudomonas* spp. were resistant to fluoroquinolones and aminoglycosides, respectively. The problem of bacterial resistance to commonly used antibiotics is worldwide. Antibiotic resistance is a greater problem in developing countries especially due to easy availability of antibiotics over the counter.[32]

Resistances of *Pseudomonas* spp. to ceftazidime, cefotaxime and cefpodoxime were 68.5%, 67.1% and 65.7%, respectively. Comparable results were reported by McGowan[33] and Hadadia et al.[22]

ES $\beta$ L-producing gram-negative bacilli have emerged as a serious problem in hospitalized patients. They pose a serious threat to the current  $\beta$ -lactam therapy as well as other antimicrobial agents. Screening by the disk diffusion method in this study revealed that 14.3% of *Pseudomonas* isolates were ES $\beta$ L producers. These results were comparable to that of Aggarwal et al.,[34] however lower than results reported by Jiang et al.[35]

Confirmation with DDST and disk potentiation tests revealed that 8.5% and 11.4% *Pseudomonas* isolates in this study were ES $\beta$ L producers in agreement with Jiang et al.[35] and Supriya et al.[36]

For AmpC production, both disk diffusion test and screening by cefoxitin disk revealed the same results that 51.4% of *Pseudomonas* spp. were AmpC producers. Similar results were reported by Altun et al.[37]

Those isolates confirmed phenotypically as ESBL and AmpC producers were subjected to PCR for the detection of gene responsible for the production of ESBL and AmpC. The most prevalent gene for ESBL production was bla<sub>CTX-M</sub> which was detected in 11.4% of *Pseudomonas* isolates while bla<sub>TEM</sub> and

bla<sub>SHV</sub> genes were not detected in any of the isolates. These results are in agreement with Picao et al.[[38](#)]

PCR detected the bla<sub>AmpC</sub> gene in 42.8%. These results are comparable to that of Khanal et al.[[39](#)]

According to the disk diffusion method, results of our study revealed that 14.3% of Pseudomonas isolates were carbapenem resistant. The modified Hodge test revealed that 8.5% of Pseudomonas isolates were M $\beta$ L producers. When tested by the imipenem-EDTA DDST, 11.4% of Pseudomonas spp. were MBL producers. However, no resistance was observed for polymyxin B and colistin. This result agreed with Behera et al.[[40](#)]

Comparison between modified Hodge test and imipenem-EDTA DDST in our study revealed that the imipenem-EDTA DDST was more sensitive for detecting MBL. The same observation was reported by Jesudason et al.[[41](#)] Mereuță et al.[[42](#)] reported that double-disk and combined disk tests are useful, simple and accessible to clinical laboratories but PCR is needed to confirm the presence of the M $\beta$ L gene in bacteria and to determine type of the enzymes.

Biofilms have an enormous impact on healthcare and are estimated to be associated with 65% of infections in ICU patients. Biofilm growth is associated with an increased level of mutations as well as with quorum-sensing-regulated mechanisms. Antimicrobial resistance is an innate feature of bacterial biofilms.[[43](#)] Many studies have shown that biofilm formation is higher in MDR strains. In this study, among 35 isolates, 21 (60.4 %) were biofilm producers. Carlos et al. reported biofilm formation in *P. aeruginosa* in 83% of clinical strains and that biofilm formation was prevalent among

isolates with a MDR phenotype.[44] In our study we found higher antibiotic resistance in biofilm producers as compared to the negative biofilm producers.

## CONCLUSION

In this study amikacin, tobramycin, imipenem, polymyxin B and colistin demonstrated maximum sensitivity against *Pseudomonas* species. Therefore, use of these antibiotics should be restricted to severe infections especially in critically ill ICU patients, in order to avoid rapid emergence of resistant strains.

Carbapenem resistance not only has enormous therapeutic implications, but is also important from the point of view of infection control. Such strains are known for rapid intra institutional spread and therefore, must be notified to infection control teams. Higher antibiotic resistances were seen in strong biofilm producers are due so testing for biofilm formation.

It is important to implement an easy, discriminatory, reproducible and cheap detection of M $\beta$ L, ES $\beta$ L and AmpC producers in our hospitals. Double disk synergy method for detection of ESBL and MBLs and estimation of ceftoxitin resistance by the disk diffusion method for AmpC detection are not only cost effective and highly sensitive but also easy to perform.

Regular antimicrobial susceptibility surveillance is essential. An effective national and state level area-wise monitoring of the resistance patterns antibiotic policy and draft guidelines should be introduced to preserve the effectiveness of antibiotics and for better patient management.

# Footnotes

Source of Support: Nil.

Conflict of Interest: None declared.

---

Articles from Journal of Global Infectious Diseases are provided here  
courtesy of Wolters Kluwer -- Medknow Publications

## PMC Copyright Notice

The articles available from the PMC site are protected by copyright, even though access is free. Copyright is held by the respective authors or publishers who provide these articles to PMC. Users of PMC are responsible for complying with the terms and conditions defined by the copyright holder.

Users should assume that standard copyright protection applies to articles in PMC, unless an article contains an explicit license statement that gives a user additional reuse or redistribution rights. PMC does not allow automated/bulk downloading of articles that have standard copyright protection.

See the copyright notice on the PMC site, <https://www.ncbi.nlm.nih.gov/pmc/about/copyright/>, for further details and specific exceptions.

# REFERENCES

1. Nseir S, Di Pompeo C, Brisson H, Dewavrin F, Tissier S, Diarra M, et al., authors. Intensive care unit-acquired *Stenotrophomonas maltophilia*: Incidence, risk factors, and outcome. *Critical Care*. 2006;10:R143 [[PubMed](#)]
2. Aloush V, Navon-Venezia S, Seigman-Igra Y, Cabili S, Carmeli Y, authors. Multidrug-resistant *Pseudomonas aeruginosa*: Risk factors and clinical impact. *Antimicrob Agents Chemother*. 2006;50:43–8. [[PubMed](#)]
3. Livermore DM, author. Multiple mechanisms of antimicrobial resistance in *Pseudomonas aeruginosa*: Our worst nightmare? *Clin Infect Dis*. 2002;34:634–40. [[PubMed](#)]
4. Queenan AM, Bush K, authors. Carbapenemases: The versatile  $\beta$ -lactamases. *Clin Microbiol*



Rev. 2007;20:440–58. [[PubMed](#)]

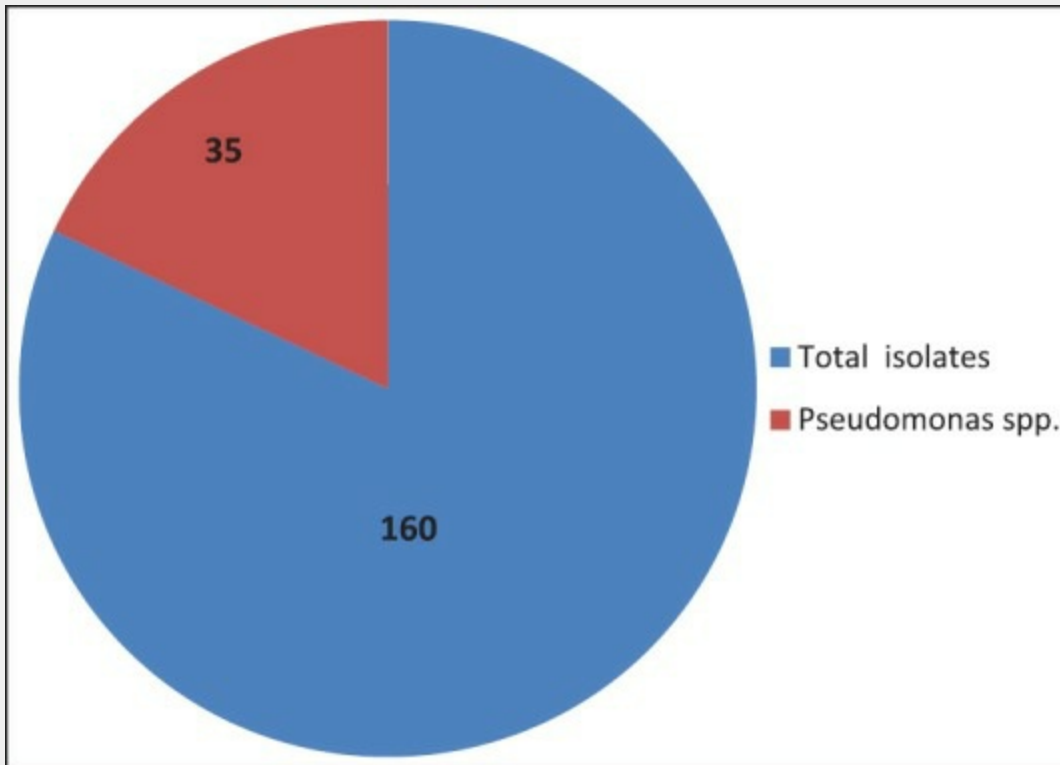
5. Cornaglia G, Giamarellou H, Rossolini GM, authors. Metallo- $\beta$ -lactamases: A last frontier for  $\beta$ -lactams? *Lancet Infect Dis*. 2011;11:381–93. [[PubMed](#)]
6. Walsh TR, Toleman MA, Poirel L, Nordmann P, authors. Metallo-beta-lactamases: The quiet before the storm? *Clin Microbiol Rev*. 2005;18:306–25. [[PubMed](#)]
7. Poirel L, Naas T, Nicolas D, Collet L, Bellais S, Cavallo JD, et al., authors. Characterization of VIM-2, a carbapenem-hydrolyzing metallo  $\beta$ -lactamase and its plasmid- and integron-borne gene from a *Pseudomonas aeruginosa* clinical isolate in France. *Antimicrob Agents Chemother*. 2000;44:891–7. [[PubMed](#)]
8. Dunne WM Jr, author. Bacterial adhesion: Seen any good biofilms lately? *Clin Microbiol Rev*. 2002;15:155–66. [[PubMed](#)]
9. Obritsch MD, Fish DN, MacLaren R, Jung R, authors. National surveillance of antimicrobial resistance in *Pseudomonas aeruginosa* isolates obtained from intensive care unit patients from 1993 to 2002. *Antimicrob Agents Chemother*. 2004;48:4606–10. [[PubMed](#)]
10. Collee JG, Duguid JP, Fraser AG, Marmion BP, Simmons A, authors. Laboratory strategy in the diagnosis of infective syndrome. *Mackie and McCartney Practical Microbiology*. 1996. 14th ed. London: Churchill Livingstone; p. 53–94
11. Collee JG, Marr W, authors. Culture of bacteria. *Mackie and McCartney Practical Microbiology*. 1996. 14th ed. London: Churchill Livingstone; p. 113–30
12. Clinical and Laboratory Standards Institute: Performance standards for antimicrobial susceptibility testing: Seventeenth informational supplement. M100-S17. 2007. Wayne, PA: Clinical and Laboratory Standards Institute;
13. Peterson DL, Bonomo RA, authors. Extended spectrum beta lactamases: A clinical update. *Clin Microbiol Rev*. 2005;18:657–86. [[PubMed](#)]
14. Jarlier V, Nicolas MH, Fournier G, Philippon A, authors. Extended-spectrum beta lactamases conferring transferable resistance to newer beta-lactam agents in *Enterobacteriaceae*: Hospital prevalence and susceptibility patterns. *Rev Infect Dis*. 1988;10:867–78. [[PubMed](#)]
15. Shahid M, Malik A, Agarwal M, Singhal S, authors. Phenotypic detection of the extended spectrum and AmpC  $\beta$ -lactamases by a new spot inoculation method and modified three-dimensional extract test: Comparison with conventional three-dimensional extract test. *J Antimicrob Chemother*. 2004;54:684–7. [[PubMed](#)]
16. Lee K, Lim JB, Yum JH, Yong D, Chong Y, Kim JM, et al., authors. blaVIM-2 cassette-containing novel integrons in metallo- $\beta$ -lactamase-producing *Pseudomonas aeruginosa* and *Pseudomonas putida* isolates disseminated in a Korean hospital. *Antimicrob Agents Chemother*. 2002;46:1053–8. [[PubMed](#)]

17. Shahid M, Ensor VM, Hawkey PM, authors. Emergence and dissemination of Enterobacteriaceae with plasmid-mediated CMY-6 and CTX-M-15 beta-lactamases in a community in North-India. *World J Microbiol Biotech.* 2009;25:1439–46
18. Shahid M, Malik A, Adil M, Jahan N, Malik R, authors. Comparison of beta-lactamase genes in clinical and food bacterial isolates in India. *J Infect Dev Ctries.* 2009;3:593–8. [[PubMed](#)]
19. Feria C, Ferreira E, Correia JD, Goncalves J, Canica M, authors. Patterns and mechanisms of resistance to beta-lactams and beta-lactamase inhibitors in uropathogenic *Escherichia coli* isolated from dogs in Portugal. *J Antimicrob Chemother.* 2002;49:77–85. [[PubMed](#)]
20. Hassan A, Usman J, Kaleem F, Omair M, Khalid A, Iqbal M, authors. Evaluation of different detection methods of biofilm formation in the clinical isolates. *Braz J Infect Dis.* 2011;15:305–11. [[PubMed](#)]
21. Mathur T, Singhal S, Khan S, Upadhyay DJ, Fatma T, Rattan A, authors. Detection of biofilm formation among the clinical isolates of *Staphylococci*: Evaluation of three different screening methods. *Indian J Med Microbiol.* 2006;24:25–9. [[PubMed](#)]
22. Hadadi A, Rasoulinejad M, Maleki Z, Yonesian M, Shirani A, Kourorian Z, authors. Antimicrobial resistance pattern of Gram-negative bacilli of nosocomial origin at 2 university hospitals in Iran. *Diag Microbiol Infect Dis.* 2008;60:301–5
23. Chim H, Hock Tan B, Song C, authors. Five-year review of infections in a burn intensive care unit: High incidence of *Acinetobacter baumannii* in a tropical climate. *Burns.* 2007;33:100–14. [[PubMed](#)]
24. Izquierdo-Cubas F, Zambrano A, Frómeta I, Gutiérrez A, Bastanzuri M, Guanche H, et al., authors. National Prevalence of Nosocomial Infections. Cuba 2004. *J Hosp Infect.* 2008;68:234–40. [[PubMed](#)]
25. Yetkin G, Otlu B, Cicek A, Kuzucu C, Durmaz R, authors. Clinical, microbiologic, and epidemiologic characteristics of *Pseudomonas aeruginosa* infections in a University Hospital. *Am J Infect Control.* 2006;34:188–92. [[PubMed](#)]
26. Al-Ghamdi S, Gedebo M, Bilal NE, authors. Nosocomial infections and misuse of antibiotics in a provincial community hospital, Saudi Arabia. *J Hosp Infec.* 2002;50:115–21. [[PubMed](#)]
27. Abd El-Fattah SM, author. Evaluation of antibiotic resistance among Gram-ve bacilli isolated from critically ill patients: Relation to risk factors and liberal use of antibiotics. M.Sc Thesis in Medical Microbiology an Immunology. Faculty of Medicine. 2008. Giza, Egypt: Cairo University; p. 66–7
28. El Masry E, author. Extended spectrum beta-lactamase-producing Enterobacteriaceae and *P. aeruginosa* causing nosocomial pneumonia in Menoufiya university hospitals. M.Sc Thesis in Medical Microbiology and Immunology. Faculty of Medicine. 2007. Menoufiya University; p.

29. Stéphan F, Cheffi A, Bonnet F, authors. Nosocomial Infections and Outcome of Critically Ill Elderly Patients after Surgery. *Anesthesiology*. 2001;94:407–14. [[PubMed](#)]
30. Giamarellou H, Antoniadou A, Kanellakopoulou K, authors. *Acinetobacter baumannii*: A universal threat to public health? *J Hosp Infect*. 2007;67:245–52. [[PubMed](#)]
31. Baran G, Erbay A, Bodur H, Ongürü P, Akinci E, Balaban N, et al., authors. Risk factors for nosocomial imipenem-resistant *Acinetobacter baumannii* infections. *Int J Infect Dis*. 2007;12:16–21. [[PubMed](#)]
32. Martinez JL, Baquero F, authors. Interactions among strategies associated with bacterial infection: Pathogenicity, epidemicity and antibiotic resistance. *Clin Microbiol Rev*. 2002;15:647–79. [[PubMed](#)]
33. McGowan JE Jr, author. Resistance in nonfermenting gram-negative bacteria: multidrug resistance to the maximum”. *Am J Med*. 2006;119(Suppl 1):S29–36. [[PubMed](#)]
34. Aggarwal R, Chaudhary U, Bala K, authors. Detection of extended-spectrum beta-lactamase in *Pseudomonas aeruginosa*. *Indian J Pathol Microbiol*. 2008;51:222–4. [[PubMed](#)]
35. Jiang X, Zhang Z, Li M, Zhou D, Ruan F, Lu Y, authors. Detection of extended spectrum beta-lactamases in clinical isolates of *Pseudomonas aeruginosa*. *Antimicrob Agents Chemother*. 2006;50:2990–5. [[PubMed](#)]
36. Supriya S, Jalgaonkar V, Ahamad S, Hassani U, authors. Evaluation of extended spectrum beta lactamase in urinary isolates. *Indian J Med Res*. 2004;120:553–6. [[PubMed](#)]
37. Altun Ş, Tufan ZK, Yağcı S, Önde U, Bulut C, authors. Extended Spectrum Betalactamases, AmpC and Metallo Beta-lactamases in emerging multi-drug resistant Gram-negative bacteria in intensive care units. 2013;2:707 . doi:10.4172/scientificreports.
38. Picão RC, Gales AC, authors. Extended-spectrum beta-lactamase producing (ESBL) *Pseudomonas aeruginosa*: Nightmare or imagination? *Prática Hospitalar*. 2007;49:79–84
39. Khanal S, Joshi DR, Bhatta DR, Devkota U, Pokhrel BM, authors.  $\beta$ -Lactamase-Producing Multidrug-Resistant Bacterial Pathogens from Tracheal Aspirates of Intensive Care Unit Patients at National Institute of Neurological and Allied Sciences, Nepal. *ISRN Microbiol*. 2013;2013:847569 [[PubMed](#)]
40. Behera B, Mathur P, Das A, Kapil A, Sharma V, authors. An evaluation of four different phenotypic techniques for detection of metallo-beta-lactamase producing *Pseudomonas aeruginosa*. *Indian J Med Microbiol*. 2008;26:233–7. [[PubMed](#)]
41. Jesudason MV, Kandathi AJ, Balaji V, authors. Comparison of the methods for the detection of the carbapenamase and the metallo-beta- lactamases production in the clinical isolates. *Indian J Med Res*. 2005;121:780–3. [[PubMed](#)]

42. Mereuță AI, Poiati A, Tuchiluş C, Dorneanu O, Nistor S, Copăcianu B, authors. Screening methods for detection of metallo-beta-lactamase producing gram-ve rods. Rev Med Chir Soc Med Nat Iasi. 2008;109:387–91. [[PubMed](#)]
43. Høiby N, Bjarnsholt T, Givskov M, Molin S, Ciofu O, authors. Antibiotic resistance of bacterial biofilms. Int J Antimicrob Agents. 2010;35:322–32. [[PubMed](#)]
44. Sanchez CJ Jr, Mende K, Beckius ML, Akers KS, Romano DR, Wenke JC, et al., authors. Biofilm formation by clinical isolates and the implications in chronic infections. BMC Infect Dis. 2013;13:47 [[PubMed](#)]

[\[Back\]](#)



**Figure 1.**

The various strains of micro-organisms isolated from the patients admitted in ICU

[\[Back\]](#)

[\[Back\]](#)

## Table 1.

Distribution of *Pseudomonas* spp. according to the type of specimen

| Type of specimen             | <i>Pseudomonas</i> spp. (%) |
|------------------------------|-----------------------------|
| Endotracheal aspirate (n=55) | 22 (40)                     |
| Wound (n=29)                 | 7 (24.1)                    |
| Urine (n=19)                 | 5 (26.3)                    |
| Blood (n=10)                 | 1 (10)                      |

[\[Back\]](#)

[\[Back\]](#)

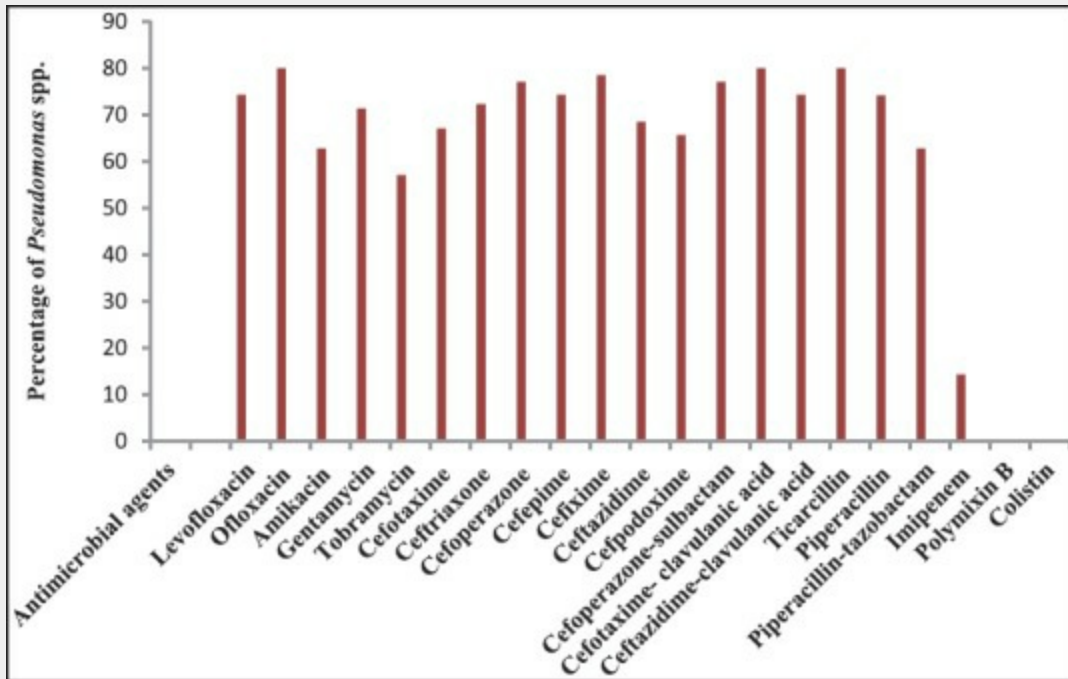
**Table 2.**

Number and percentage of total and *Pseudomonas* spp.-positive cases in relation to risk factors

| Risk Factors                            | Total No. and % of +ve Cases (n = 150) (%) | No. and % of +ve Cases of <i>Pseudomonas</i> spp. (n = 35) (%) | P-Value   |
|---|--|--|-----------|
| Exposure to invasive devices or surgery |  |  |           |
| Endotracheal tube/tracheostomy          | 75 (50)                                    | 32 (91.4)  | <0.000    |
| Intravenous catheter                    | 150 (100)                                  | 35 (100)   | 1         |
| Central venous line                     | 50 (33.3)                                  | 15 (42.8)  | 0.327     |
| Urinary catheter                        | 150 (100)                                  | 25 (71.4)  | 1.8       |
| Nasogastric tube                        | 90 (60)                                    | 18 (51.4)  | 0.44      |
| Mechanical ventilation                  | 75 (50)                                    | 32 (91.4)  | <0.000    |
| Previous surgery                        | 54 (36)                                    | 15 (42.8)  | 1<br>0.56 |
| Co-morbid conditions                    |  |  |           |
| COPD                                    | 16 (10.6)                                  | 12 (34.2)  | 0.001     |
| Cancer                                  | 10 (6.7)                                   | 06 (17.1)  | 0.08      |
| DM with complications                   | 38 (25.3)                                  | 15 (42.8)  | 0.06      |
| Hypertension                            | 54 (36)                                    | 22 (62.8)  | 0.004     |
| CHF                                     | 10 (6.7)                                   | 6 (17.1)   | 0.08      |
| CRF                                     | 4 (2.7)                                    | 2 (5.7)  | 0.596     |
| Tuberculosis                            | 4 (2.7)                                    | 2 (5.7)  | 0.596     |
| Duration of ICU stay                    |  |  |           |
| <7 d                                    | 25 (16.8)                                  | 8 (22.8)   | 0.46      |
| 7-15 d                                  | 76 (50.7)                                  | 25 (71.4)  | 0.03      |
| >15 d                                   | 51 (34)                                    | 02 (5.7)   | 0.0006    |

[\[Back\]](#)

[\[Back\]](#)



**Figure 2.**

Antibiotic resistance pattern of *Pseudomonas* spp. detected by the disk diffusion method

[\[Back\]](#)



[\[Back\]](#)

### Table 3.

Number and percentage of ESâL producing *Pseudomonas* spp. detected by phenotypic methods

| Phenotypic tests         | No. and % of <i>Pseudomonas</i> spp. (%) |
|--------------------------|--|
| Disk diffusion test      | 8 (22.9)                                 |
| Double-disk synergy test | 5 (14.3)                                 |
| Disk potentiation test   | 7 (22)                                   |

[\[Back\]](#)

[\[Back\]](#)

#### **Table 4.**

Number and percentage of AmpC producing *Pseudomonas* spp. detected by phenotypic methods

| Phenotypic tests    | No. and % of <i>Pseudomonas</i> spp. (%) |
|---------------------|--|
| β-lactam inhibitors | 15 (42.8)                                |
| Cefoxitin disk      | 15 (42.8)                                |

[\[Back\]](#)

[\[Back\]](#)

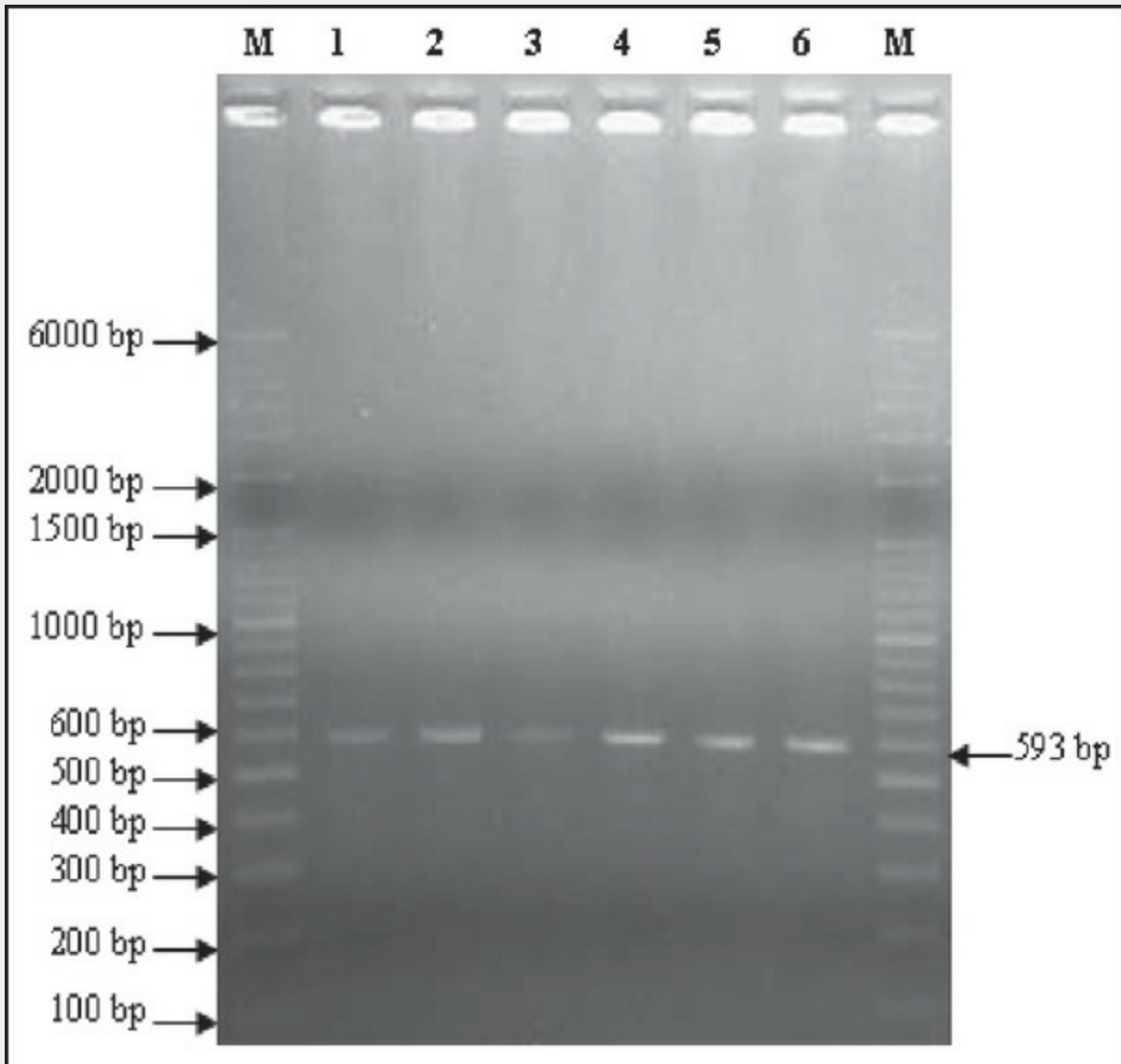
## Table 5.

Number and percentage of MBL producing *Pseudomonas* spp. detected by phenotypic methods

| Phenotypic tests                       | No. and % of <i>Pseudomonas</i> spp. (%) |
|--|--|
| Disk diffusion test                    | 5 (14.4)                                 |
| Modified Hodge test                    | 3 (8.5)                                  |
| Imipenem-EDTA double-disk synergy test | 4 (11.4)                                 |

[\[Back\]](#)

[\[Back\]](#)

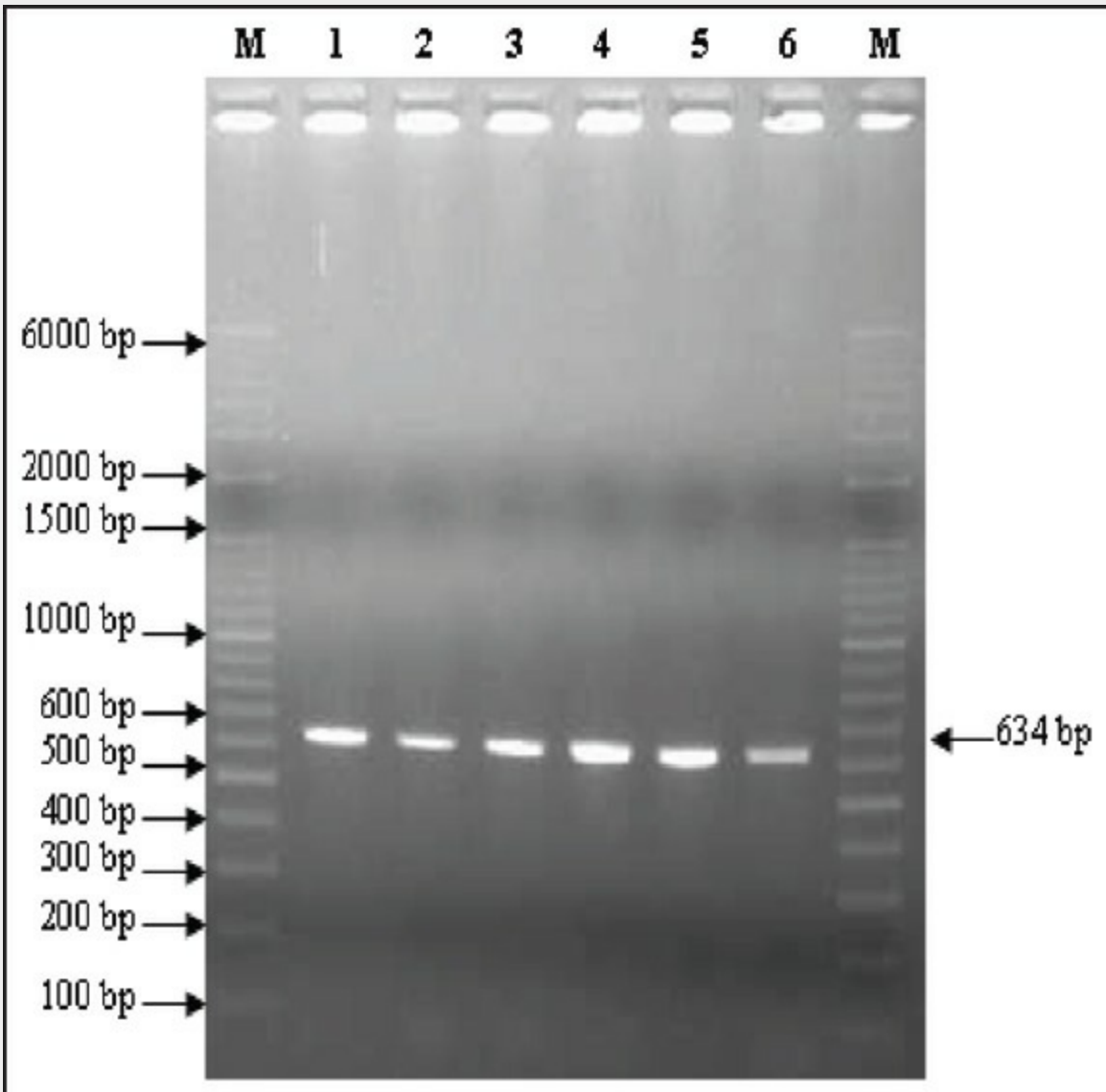


**Figure 3.**

2% agarose gel electrophoresis showing results of pcr for the detection of *BLA<sup>ctx-m</sup>* gene. lanes m are showing ladders (o' range rulertm 100 bp + 500 bp). Lanes 2-6 are showing test strains positive for *BLA<sup>ctx-m</sup>* gene (593 bp). Lane 1- positive control

[\[Back\]](#)

[\[Back\]](#)



**Figure 4.**

2% agarose gel electrophoresis showing results of pcr for the detection of *BLA<sup>ampc</sup>* gene. Lanes m are showing ladders (o' range rulertm 100 bp + 500 bp). Lanes 2-6 are showing test strains positive for *BLA<sup>ampc</sup>* gene (634 bp). Lane 1 1- positive control

[\[Back\]](#)

[\[Back\]](#)

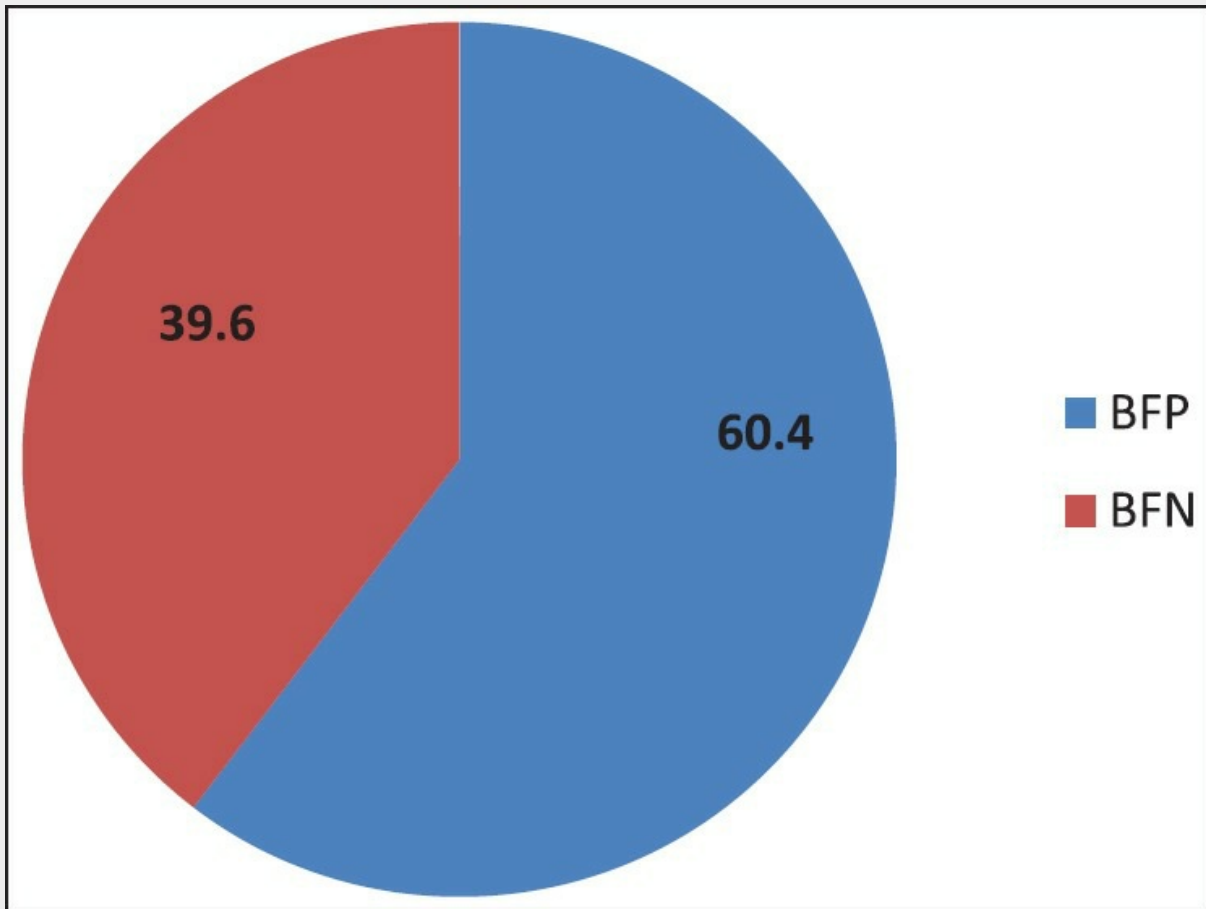
## Table 6.

*bla* (CTX-M, SHV, TEM) and *blaAmpC* gene distribution among *Pseudomonas* isolates from ICU patients

| Gene distribution | <i>Pseudomonas</i> spp. (n = 35) (%) |
|-------------------|--------------------------------------|
| CTX-M             | 6 (17.1)                             |
| TEM               | Nil                                  |
| SHV               | Nil                                  |
| AmpC              | 13 (37.1)                            |

[\[Back\]](#)

[\[Back\]](#)

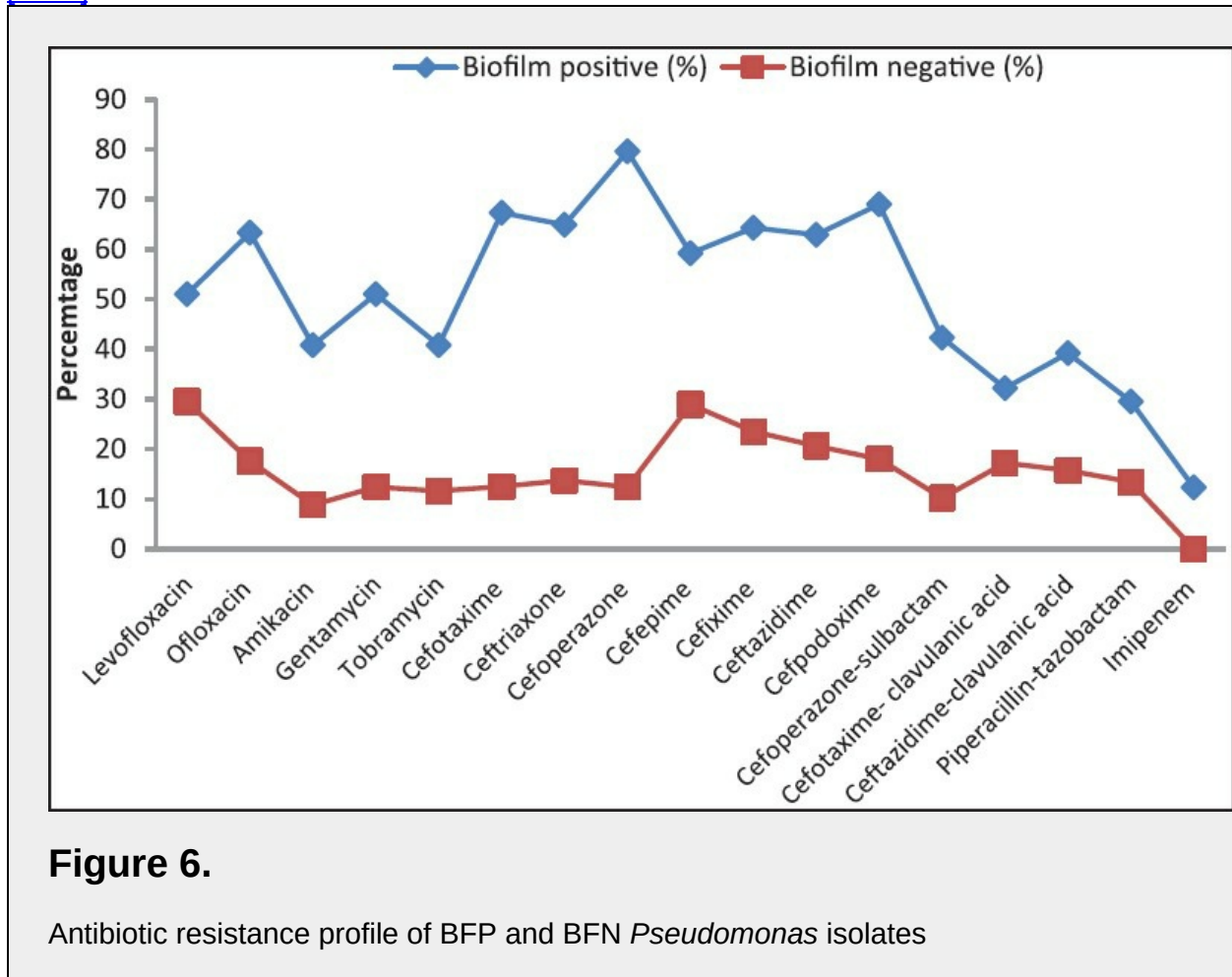


**Figure 5.**

Biofilm production in *Pseudomonas* isolates from ICU patients

[\[Back\]](#)

[\[Back\]](#)



**Figure 6.**

Antibiotic resistance profile of BFP and BFN *Pseudomonas* isolates

[\[Back\]](#)